

PLATE	QUANTITY
101	6
102	6
103	6
104	6
105	6
106	6
107	6
108	6
109	6
110	6
111	6
112	6
113	6
114	6
115	6
116	6
117	5
118	5
119	5
120	5
121	4
122	3
123	2
124	1
1	5
2	5
3	5
4	5
5	4
6	4
7	4
8	4
9	1
10	1
11	1
12	1
13	1

PLATE	QUANTITY
201	10
202	10
203	10
204	10
205	9
206	9
207	9
208	9
209	9
210	9
211	9
212	9
213	9
214	9
215	9
216	9
217	9
218	9
219	9
220	9
221	9
222	9
223	8
224	4
A	4
B	4
C	4
D	4
E	4
F	4
G	2
H	2
J	2
K	2
L	2
M	2
N	2
P	2
Q	2
R	2
AA	2
BB	2
CC	2
DD	2
EE	4

REVISIONS	DATE	BY
REMOVE PIT SEATING; CHANGE NUMBERING PER RED LINE. PAK	2/19/16	PAK
CHANGE ALL SEAT NUMBERING PER CUSTOMER MARK UP. PAK	4/27/16	PAK
NO CHANGE THIS SHEET. PAK	5/28/16	PAK
NO CHANGE THIS SHEET. PAK	9/13/16	PAK

LEVEL	A	B	C	D
-------	---	---	---	---

PREPARED FOR:  
**SOLANO COMMUNITY COLLEGE**  
**FAIRFIELD, CA 94534**

TITLE:  
**ROW LETTER & SEAT NUMBER LAYOUT**

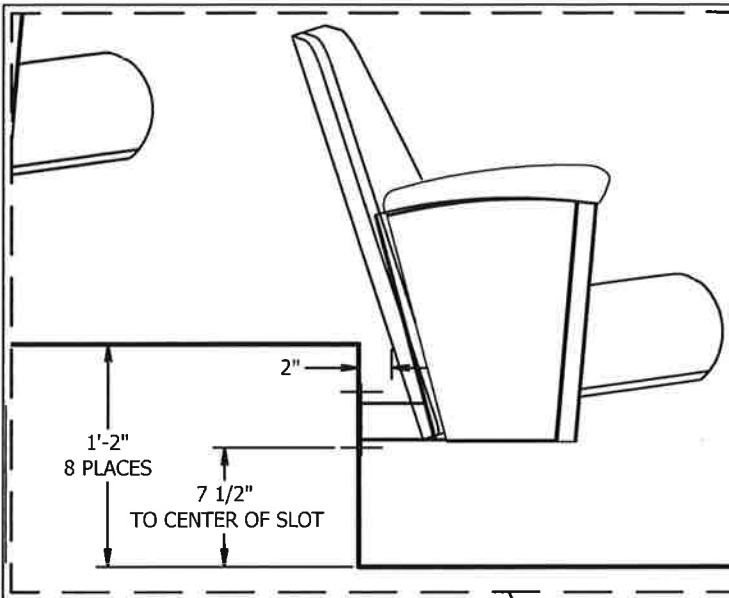
For Tolerance Specifications see: **ESS2002**  
 Workmanship Standards Document see: **PCD-0009**

For Engineering Specifications see:

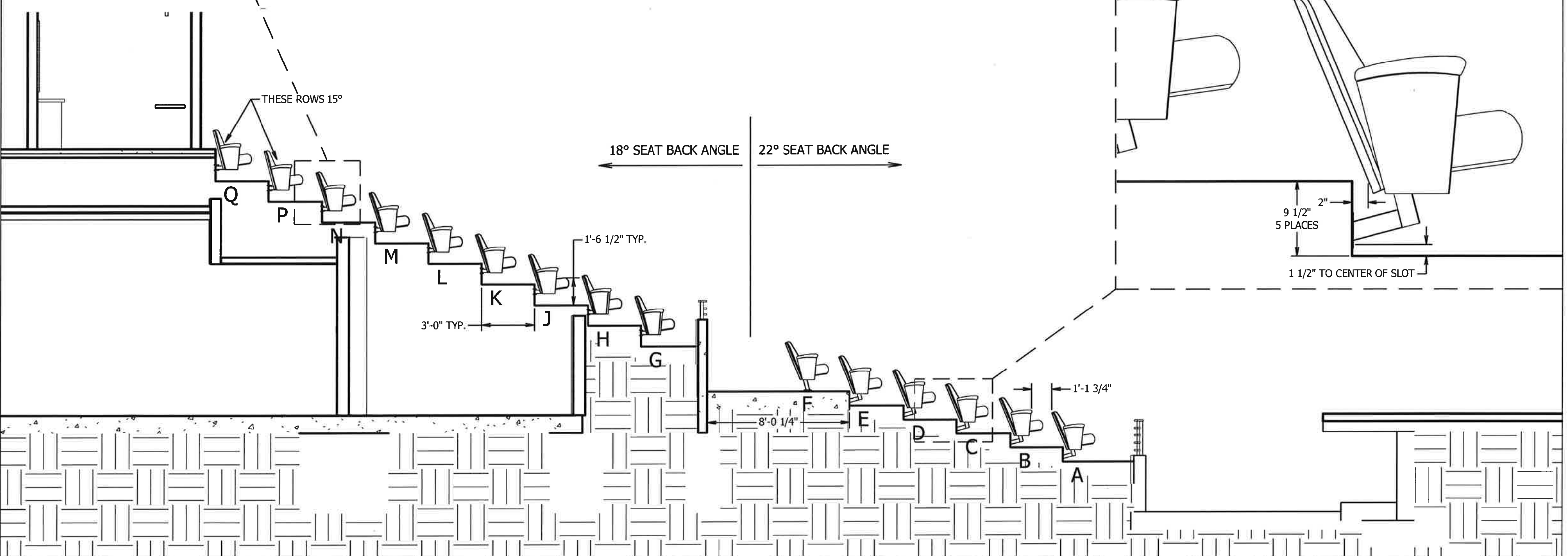
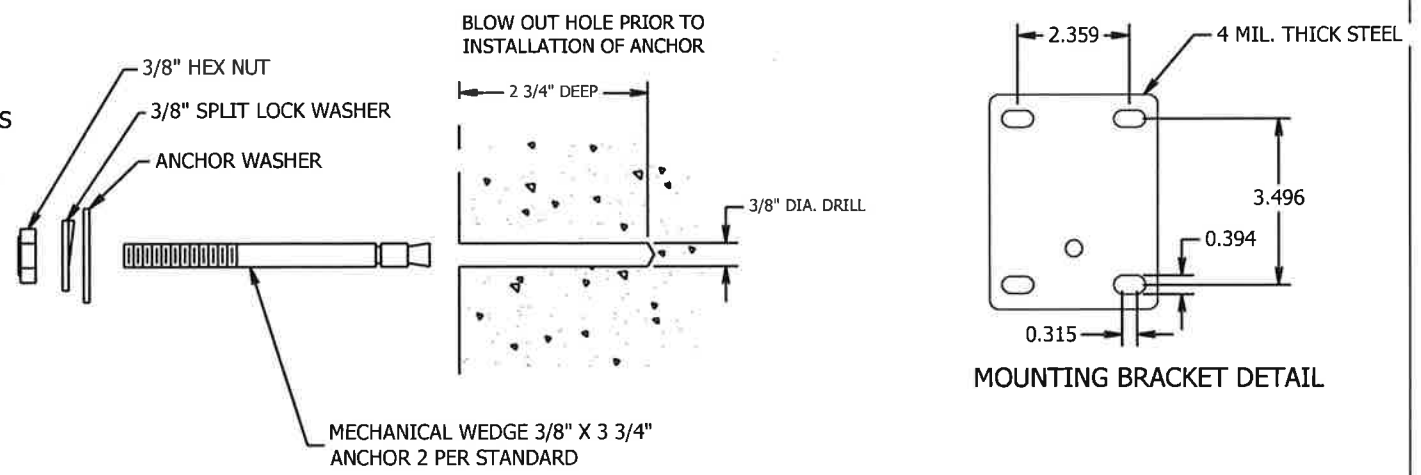
Finish Instructions:  
 DATE: **11/19/15**  
 DRAWN BY: **PAK**  
 CHECKED BY: **DK**  
 W/O NUMBER: **1598669**  
 SCALE: **3/16" = 1'-0"**

**Wenger**<sup>®</sup>  
 OWATONNA, MN - TELEPHONE 507-455-4100

DWG. NO. **23027X201** SHEET **5** OF **5** REV. **D**



- FLOOR REQUIREMENTS**
1. ALL FLOORS, SLABS AND RISER CONSTRUCTED OF CONCRETE (PRE-CAST OR POURED) MUST MEET THE FOLLOWING CRITERIA:
    - A. FLOOR/SLAB MUST BE 4" THICK MIN. WITH THE TOP 2" CLEAR OF ANY CONSTRUCTIONS (REBAR, MESHING, ETC.).
    - B. RISER MUST BE 4 1/2" [114] THICK MIN. WITH THE FIRST 2 1/2" [64] ALONG THE FACE CLEAR OF ANY OBSTRUCTIONS (REBAR, MESHING, ETC.).
    - C. ALL CONCRETE MUST HAVE A MINIMUM STRENGTH OF 3,000 P.S.I. FOR NORMAL WEIGHT AGGREGATE AND 5,000 P.S.I. FOR LIGHT WEIGHT AGGREGATE IN ORDER TO OBTAIN PROPER ANCHOR ATTACHMENT.
    - D. ALL STEEL FLOORS/RISER MUST BE 1/4" [6] MIN. TO 3/8" [10] MAX. THICK GRADE A36 STEEL.



REVISIONS	DATE	BY
ADDED DETAILS SHOWING HEIGHT TO MOUNT SEATS AND DISTANCE FROM FRONT OF RISER TO BACK OF SEAT; ADDED RISER FOOT DETAIL; UPDATED RISER DEPTH DIMS; NOW Q BACK ANGLE CHANGE TO 15°	2/19/16	PAK
UPDATED PER REDLINE.	4/26/16	PAK
NO CHANGE THIS SHEET.	5/26/16	PAK
UPDATE PER FIELD MEASUREMENTS.	9/13/16	PAK

PREPARED FOR:	SOLANO COMMUNITY COLLEGE FAIRFIELD, CA 94534
TITLE:	SECTION VIEW

For Tolerance Specifications see:	ES52002
Workmanship Standards Document see:	PCD-0009
For Engineering Specifications see:	
Finish Instructions:	
DATE:	11/19/15
DRAWN BY:	PAK
CHECKED BY:	DK
W/O NUMBER:	1598669
SCALE:	3/16" = 1'-0"

Sheet Size:	
DATE:	11/19/15
DRAWN BY:	PAK
CHECKED BY:	DK
W/O NUMBER:	1598669
SCALE:	3/16" = 1'-0"

**Wenger®**

OWATONNA, MN - TELEPHONE 507-455-4100

DWG. NO. **23027X201** SHEET **3** OF **5** REV. **D**